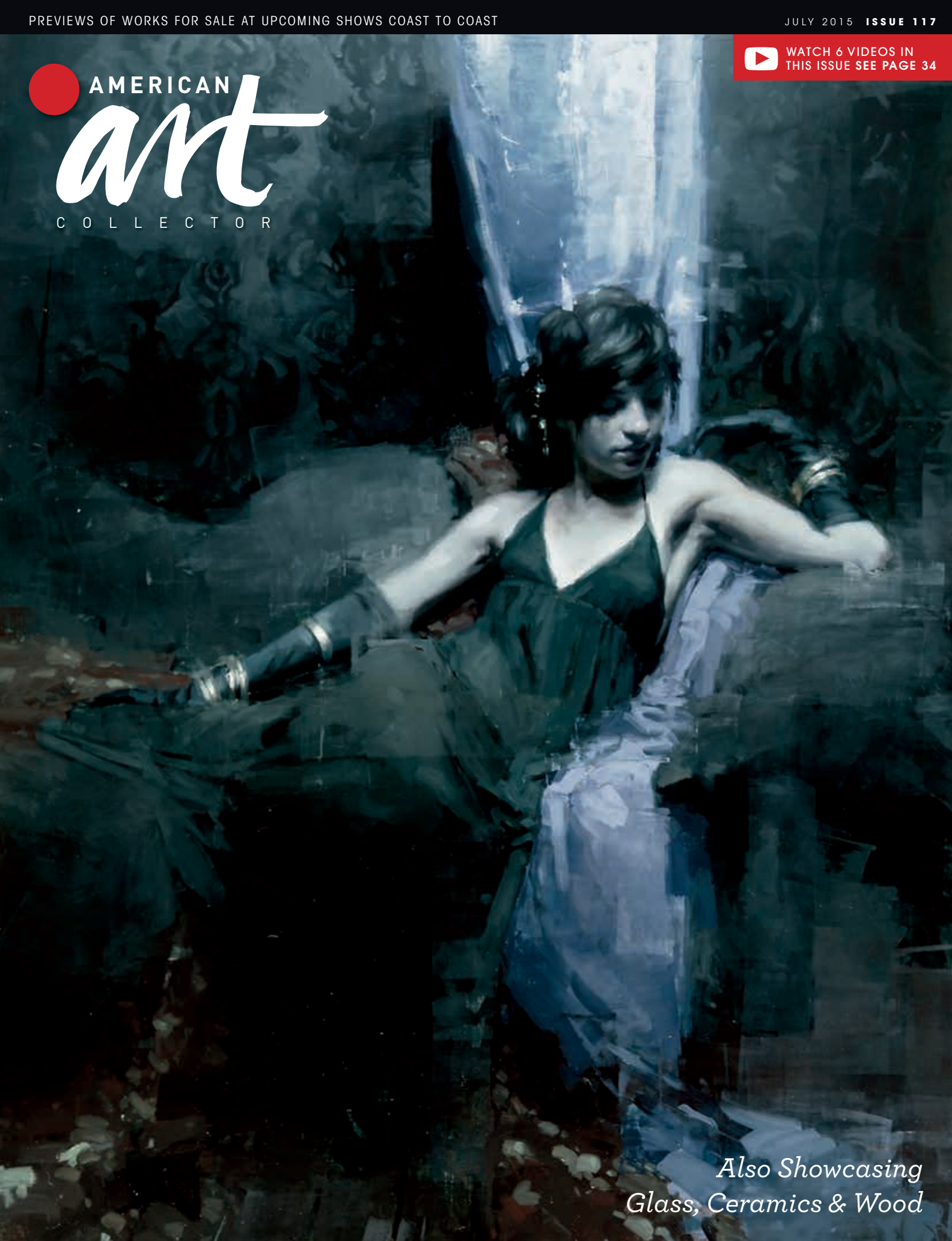


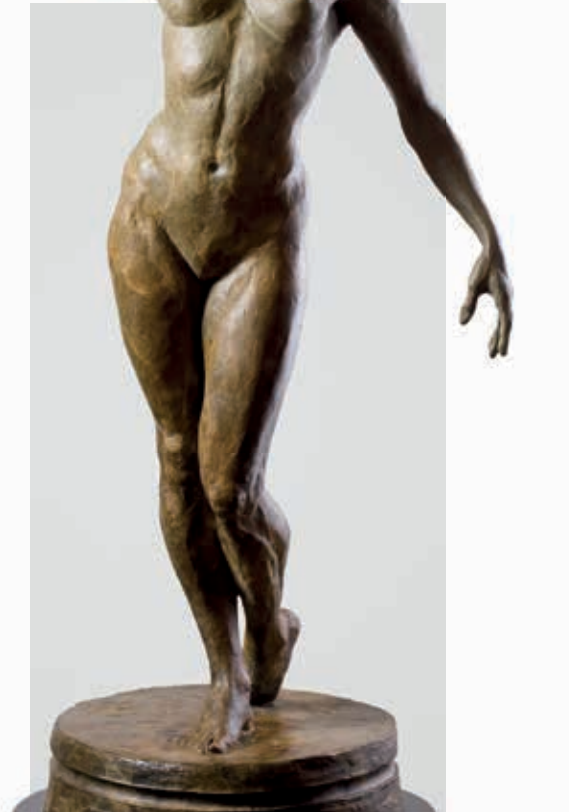
AMERICAN
art
COLLECTOR

 WATCH 6 VIDEOS IN
THIS ISSUE SEE PAGE 34



*Also Showcasing
Glass, Ceramics & Wood*

Release



The Sculpture Connection at Greenberg Fine Art in Santa Fe, New Mexico, will have more than 60 sculptures from **Paige Bradley, Martin Eichinger, Mark Yale Harris, Carl Berney, Bernard Franz, and Caroline Carpio** at the group sculpture exhibition *Release: A World Premiere*. The featured piece in the exhibition is Bradley's *Release*, a monumental sculpture of triumph and overcoming adversity.

"Stretching binds high over her head with power and confidence, she reminds us how good it feels to overcome oppression," the artist explains. "*Release* worked well as a maquette, but now that she is over 7 feet tall, the life-size has quite a presence in a room. I am so excited to see it in Santa Fe this July."

Paul Hartsock, owner of Greenberg Fine Art, believes Bradley is a very talented

artist and is excited to showcase her gifts. "Some sculptors are highly skilled artisans and fabricators; some can directly strike to our deepest emotional and esthetic centers. It is a rare artist who exhibits both of these talents. Paige Bradley is clearly among them," says Hartsock. "We are excited about our world premiere in July of a 7-foot-plus monumental edition of *Release*, a powerful expression of form, tension and dynamic energy."

Bradley's bronze titled *Expansion*, also in the show, was inspired by a moment of seeking truth and honesty. The artist says she needed her ego to break apart, and she needed more risk and fallibility.

"I took a piece that was executed with accuracy and control and just dropped her on the floor," Bradley says of *Expansion* and creating the cracks in her body.

"I wanted the forces of nature to have a part in creating this piece as well. Once it broke, I thought, 'What have I done?', but it was all part of the process of letting go and trusting the universe would make space for me to take risks. I had no idea it would affect so many so profoundly. It came from a place of truth, my own processing. I suppose this is why it became so impactful to others. It is not an illustration of a story. It is just pure truth."

Eichinger's sculptures are connected to narrative or philosophic stories. His piece *Brimstone* will be in the exhibition and is one in the four-part *Goddess of the Elements Series*. The series consists of earth, water, air and fire, with *Brimstone* representing fire. The sculpture is a combination of romantic realism and abstract constructivism, with the abstract



3



4



5

combines overlapping “images of the earth in section or coming apart with ruins or hints of past civilizations showing through as might be seen in an architectural dig.” As a compound, brimstone is unstable and explosive, often used in making dynamite.

“If you look at her physical form as she overlays the abstracted earth, one hand is reaching into the center of the implied sphere, and the other is reaching outside beyond the surface, much like a volcano connects the molten core of the planet to the surface as it erupts up and into the atmosphere,” explains Eichinger. “A simpler way to say perhaps the same thing, is ‘Maybe Mother Nature is a little pissed.’”

Release: A World Premiere runs July 24 through August 6. ●

1
Paige Bradley,
Expansion, bronze,
28 x 35 x 17”

2
Paige Bradley,
Balance Third Life,
bronze, 32 x 24 x 16”

3
Mark Yale Harris,
On the Run, bronze,
32 x 15 x 27”

4
Paige Bradley, *Soleil*,
bronze, 17 x 10 x 7”

5
Martin Eichinger,
Brimstone, bronze,
48” high